

# Maintenance Training Device [Airbus Family]

THE INTELLIGENT TRAINING SOLUTION



A320 A330 A340

INNOVATIVE CONCEPT OF "RE-HOSTING" FULL FLIGHT SIMULATOR SOFTWARE CODE TECHNOLOGY

DEVELOPED IN COLLABORATION WITH AND VALIDATED BY AIRBUS

GENERAL

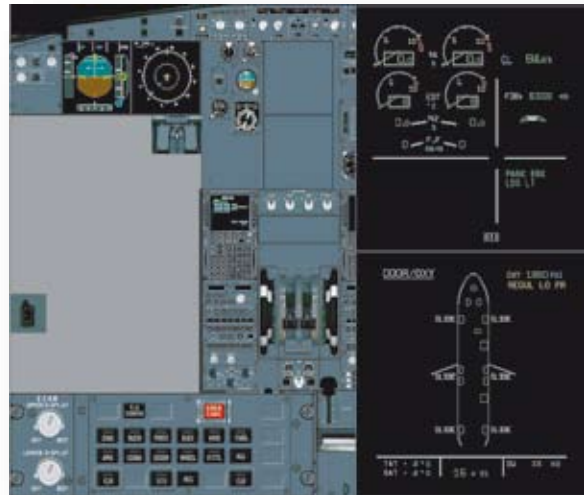
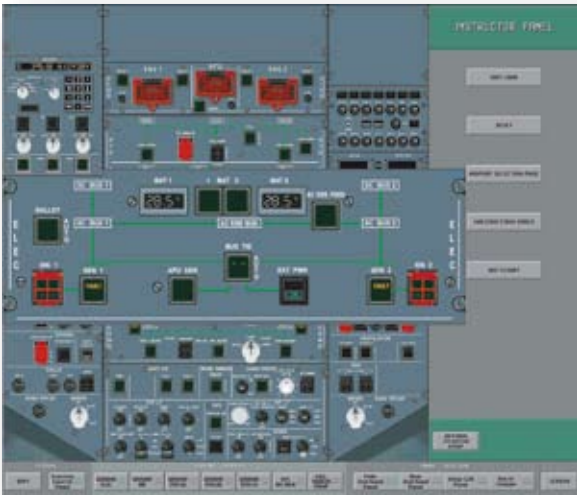
TASK-ORIENTED TOOL

The Maintenance Training Device (MTD) is the best free-play device to train maintenance technicians on Airbus aircraft cockpit based maintenance procedures.

The goal of every maintenance training is to increase aircraft dispatch reliability and safety. To achieve this, the MTD gives maintenance technicians a true free-play environment where they can practice and refine more than 140 basic

standard AMM procedures and more than 80 basic TSM procedures. It is also ideal for just-in-time training on the line.

These objectives are reinforced by the unrivaled accuracy of the simulation software created by using the innovative concept of "re-hosting" technology where software code is incorporated directly from the Full-Flight Simulator (FFS).



## BENEFITS

- Designed in full cooperation with AIRBUS.
- Quick return on investment by reducing Full-Flight Simulator (FFS) sessions.
- Decreases overall training costs.
- Decreases overall maintenance costs.
- Review system operation and procedures before performing them on aircraft.
- Acquire practical skills.
- Learn and practice aircraft maintenance procedures for over 140 different cockpits configurations.
- Practice Troubleshooting and MEL procedures (67 troubleshooting exercises).
- Provides more than 80 Post-Flight reports.
- Fixed Based Simulator / Full-Flight Simulator like.
- Improves aircraft dispatch reliability.
- Decreases the number of "No Fault Found" component removals.
- Compliant with ATA specifications 104 and JAR 66 regulation.
- In order to ensure the maximum commonality among other training media, the Aircraft systems configuration simulated in the MTD is fully compliant with the current Airbus FFS definition. The software updating is based on the same updating cycle as the Airbus simulator.
- Low-pressure training environment.
- Enhances classroom instruction.
- Improves individual practice.

## TRAINING EVENTS (PARTIAL LIST)

The trainer is the right tool for initial training on :

- Systems introduction.
- Normal and non-normal operations.
- BITE operations.
- Troubleshooting practices.
- CFDS / AIDS knowledge enhancement.
- Engine run-up (normal and abnormal).
- APU starts.

and for recurrent training.

Students will be able to :

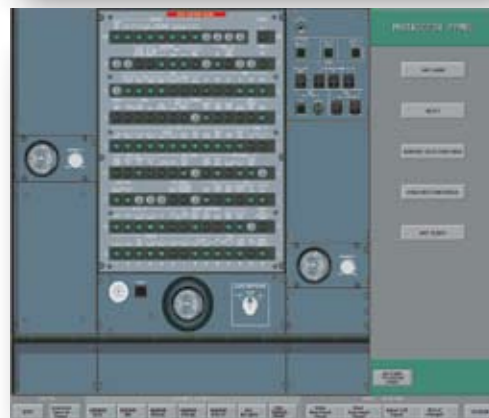
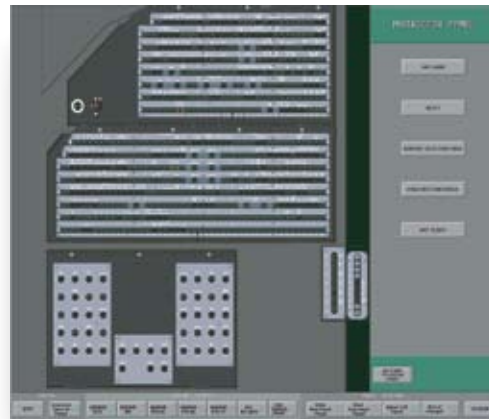
- Identify, locate and explain the functions of all controls and indications for the Flight Control System.
- Access all relevant CFDS menus.



**AIRBUS**

*The product is developed in close cooperation with Airbus for almost 10 years on crew training tools and PC based simulators.*

## CB PANELS



## OUT OF COCKPIT



### 3D COCKPIT

- Provides full size, open replica of the Aircraft Cockpit with all necessary panels and controls to complete AMM and TSM exercises supported by the simulation software.
- Realistic cockpit replica.
- Modular cockpit architecture.
- Configuration allows for easy component removal and replacement.



### OPTIONS

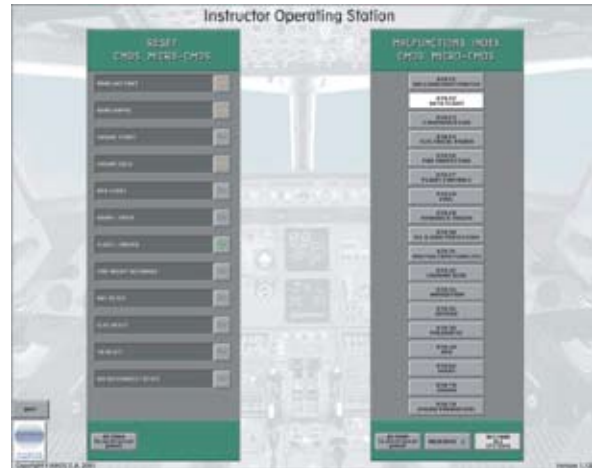
- Auto Failure Configuration :  
The MTD performs an automatic flight and introduces failures in the chosen flight phase, reducing the instructor workload to setup the MTD for troubleshooting.

### DEDICATED CUSTOMER SUPPORT

- With each sale, we aim at forging a partnership with our customer that lasts throughout the lifetime of the product. Complete customer satisfaction is our number one goal.
- We offer a full range of services to optimize the performance of your trainer :
  - Technical assistance
  - Timely distribution of Technical Support Bulletins

### INSTRUCTOR OPERATING STATION (IOS)

- User-friendly interface.
- IOS functions : Initialization , Reset , Malfunctions.  
The IOS window can be either integrated with the 2D or 3D MTD displays, or displayed on a remote IOS station. This remote IOS can control up to 12 MTD stations.



### FEATURES

- 2D or 3D configurations available.
- The 2D configuration uses two computer monitors (1280 x 1024 definitions). All simulated cockpit controls and displays are shown on the monitors :
  - One display shows the pedestal, EIS (captain side simulated) and glareshield.
  - The second monitor presents the main overhead panel, the rear overhead panel and Circuit Breakers panels.
- Accommodates customer navigation data base.
  - Service Information Letters
  - Customization services
  - Installation and training services
  - Software upgrades...
- For faster and more convenient service in fulfilling your support requirement, we have one point of contact : the Customer Support Manager.