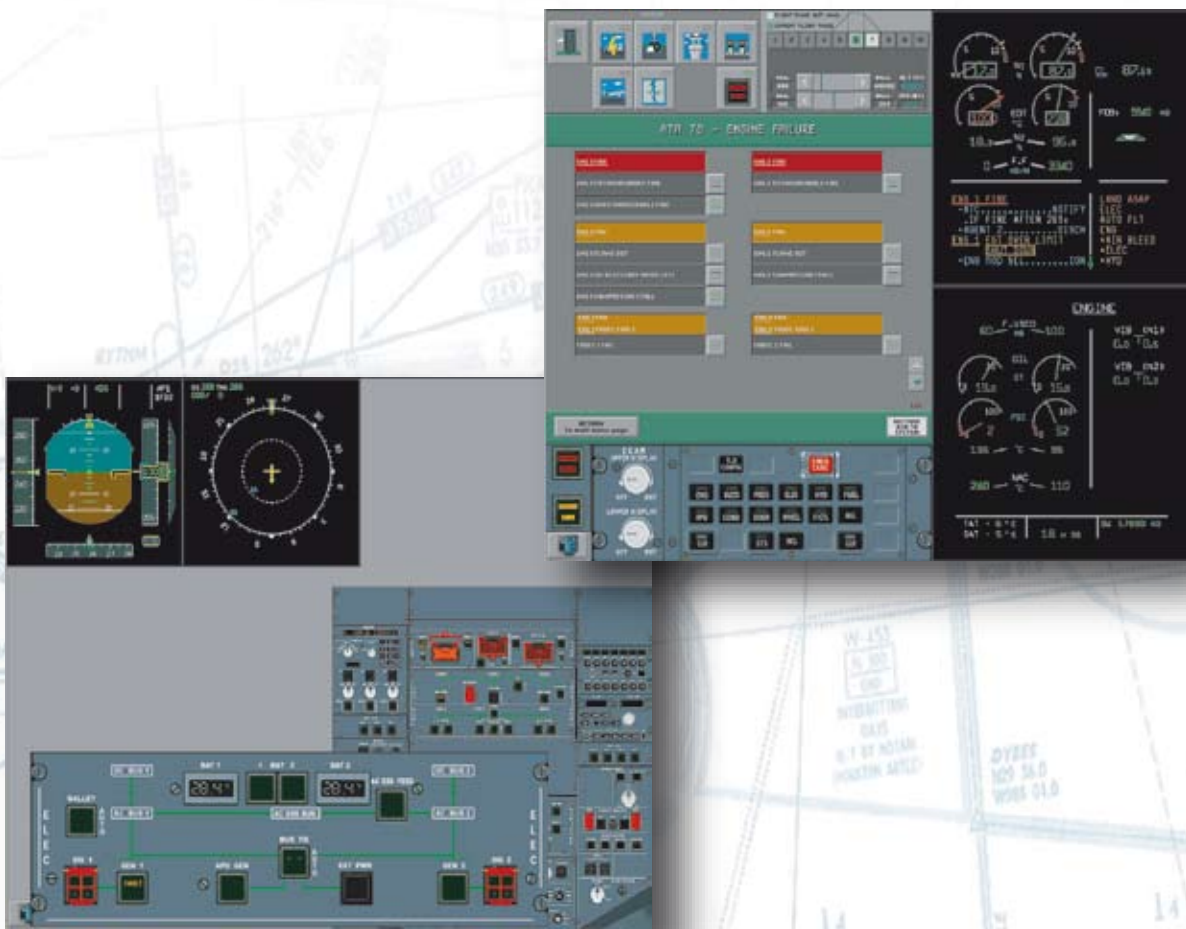


ECAM System Trainer [Airbus Family]

THE INTELLIGENT TRAINING SOLUTION



A320 A330 A340

INNOVATIVE CONCEPT OF "RE-HOSTING" FULL FLIGHT SIMULATOR SOFTWARE CODE TECHNOLOGY

DEVELOPED IN COLLABORATION WITH AND VALIDATED BY AIRBUS

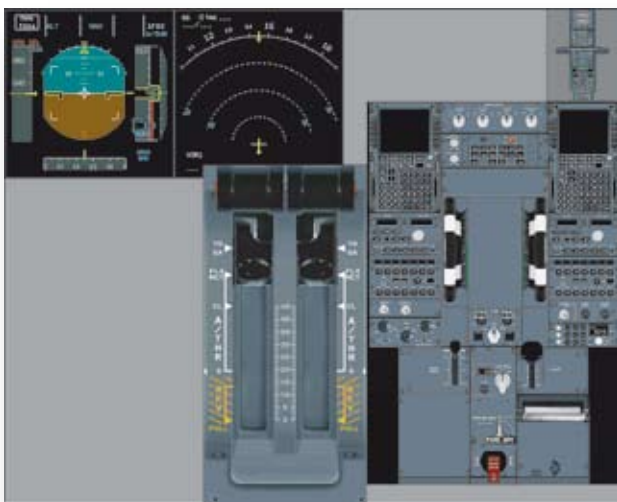
GENERAL

COMPLETE AIRCRAFT SYSTEMS TRAINING

The ECAM SYSTEMS TRAINER provides complete aircraft systems and ECAM simulation.

In 2D configuration, this trainer is an excellent device for accelerating the transition of pilots to today's sophisticated glass-cockpit, providing a low cost and pressure free environment.

The ECAM SYSTEMS TRAINER brings the innovative concepts of "re-hosting" technology where the software code from the Full Flight Simulator is directly incorporated in a PC environment.



Fully integrated in all Airbus Training Centers.

BENEFITS

- Designed in full cooperation with AIRBUS.
- Optimize pilots training time and cost by reducing Full-Flight Simulator (FFS) Sessions.
- Accelerate transition training for pilots moving to glass-cockpit by replicating situations that could otherwise only be carried out in a FFS.
- In order to ensure the maximum commonality among other training media, the ECAM System Trainer technical configuration is fully compliant with the current Airbus FFS definition. Software updates are based on the same updating cycle as the Airbus FFS Simulator.



AIRBUS

The product is developed in close cooperation with Airbus for almost 10 years on crew training tools and PC based simulators.

TRAINING EVENTS (PARTIAL LIST)

- Reinforce ECAM concept, understanding and mechanization.
- Allow a review of the ECAM System pages in operational configurations.
- Introduce the operational practice of the ECAM in normal and abnormal operations.
- Introduce ECAM warning architecture, ECAM malfunction classification and presentation.
- Introduce Aircraft Dispatch procedures, with the appropriate malfunctions and MMEL use.
- Allow review of announcement and call-outs. Relationship ECAM - QRM.

THE COCKPIT HAS BEEN DIVIDED IN 4 SECTIONS :

REAR OVERHEAD PANEL SECTION



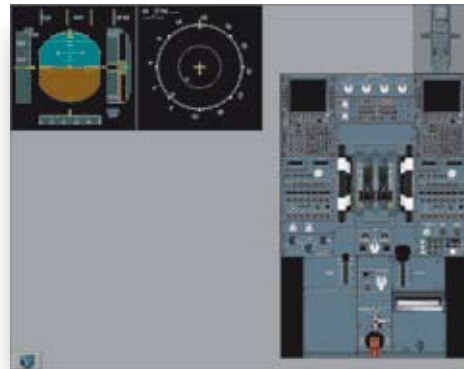
OVERHEAD PANEL SECTION



INSTRUMENT SECTION

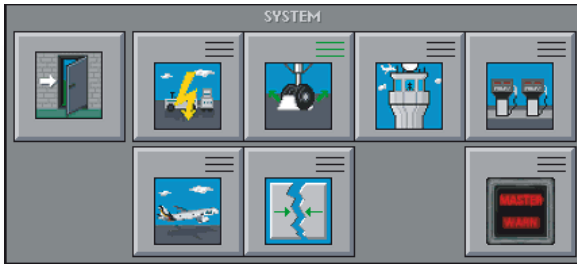


PEDESTAL SECTION

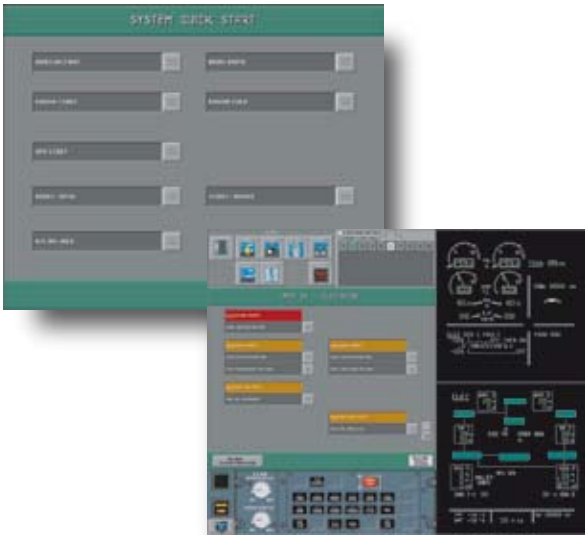


INSTRUCTOR OPERATING PANEL

- User friendly interface based on icon technology.



Behind the icons, usual FFS functions such as RESETS, ADIRS INSTANT ALIGNMENT, etc. are available.



- Over 250 malfunctions options available (Identical to those available on the FFS).

DEDICATED CUSTOMER SUPPORT

- With each sale, we aim at forging a partnership with our customer that lasts throughout the lifetime of the product. Complete customer satisfaction is our number one goal.
- We offer a full range of services to optimize the performance of your trainer :
 - Technical assistance
 - Timely distribution of Technical Support Bulletins

FEATURES

- Simulation station configuration possible (two monitors configuration).
 - One monitor is dedicated to the display of the Upper and Lower ECAM DU, ECAM Control Panel and Instructor Control Panel.
 - The second monitor displays the rest of the Cockpit : aft overhead panel, fore overhead panel, glareshield.

HARDWARE REQUIREMENTS

The minimal hardware configuration required for a correct ECAM System Trainer operation is as follows :

- Pentium II, 450 Mhz.
- 128 Mo of RAM.
- A hard disk drive of 1 Go.
- CD-ROM driver.
- Two 21" monitors recommended.
- Windows 95, 98, 2000 or NT3.51 or higher.
- If the operating system is Windows 98 : two graphics boards with a resolution of 1280/1024 pixels in 256 color each.
- If the operating system is Windows 95 or NT3.51 : one graphic board with a dual output, each one with the same resolution as above.

It may be run from a laptop with 2 video outputs in order to be shown on a video projector or an external screen.

- Service Information Letters
- Customization services
- Installation and training services
- Software upgrades...
- For faster and more convenient service in fulfilling your support requirement, we have one point of contact : the Customer Support Manager.