

# Flight Training Device [Airbus Family]

THE INTELLIGENT TRAINING SOLUTION



A320 A330 A340

JAA STD2A : LEVEL 1, LEVEL 2    FAA : LEVEL 4, LEVEL 5

AIRBUS FULL-FLIGHT SIMULATOR REHOSTED SOURCE CODE

## GENERAL

### FREE-PLAY TRAINER

ECA Faros' full range of Airbus Flight Training Devices (FTDs) answers the call for precise, cost-effective flight training solutions. Each FTD is a life-size 3D replica of the cockpit designed to give students the feel of being in the actual aircraft.

Every component and feature of our FTDs has been specifically designed to both match aircraft characteristics and provide years of reliable operation. Seamless integration between our high-quality software and rugged, durable hardware, combine to deliver a highly accurate, fully realistic training environment.

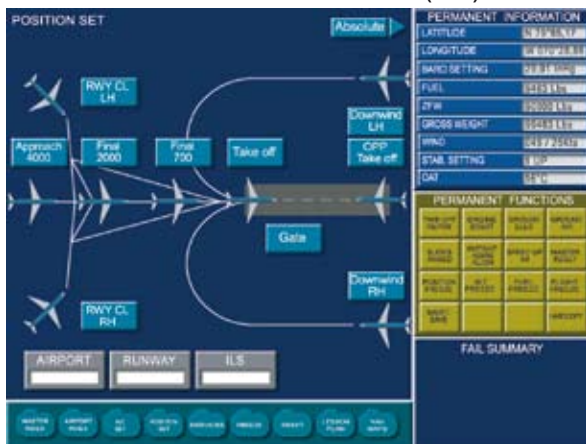
These high-fidelity FTDs provide an excellent platform for initial familiarization on the basic functions of the flight management and aircraft systems, and for transition training of pilots to sophisticated glass-cockpit aircraft. These comprehensive devices provide a cost-effective mean of off-loading significant amounts of training tasks from a fixed-based (FBS) or full-flight simulator (FFS) to these lower-cost platforms.



## BENEFITS

- Cost-effective : replicates training that was formerly only available on a much more expensive platform (e.g. Fixed-Based Simulator, Full-Flight Simulator or aircraft).
- Reduces Full-Flight Simulator time requirements in Flight Crew training by off-loading important training events from the FFS to a much lower cost platform.
- Quick return on investment.
- Decreases overall training costs while providing excellent training. Provides wide flexibility of training methods.
- Ability to understand and practice ECAM system procedures and functions under both normal and abnormal operations.
- Accelerates transition training of pilots moving to today's sophisticated aircraft.
- Delivered from a high performance system that provides realistic execution of the entire FTD components and displays.
- Low-pressure training environment.
- Equipment guaranteed for durability and reliability, as well as effective after sale service.

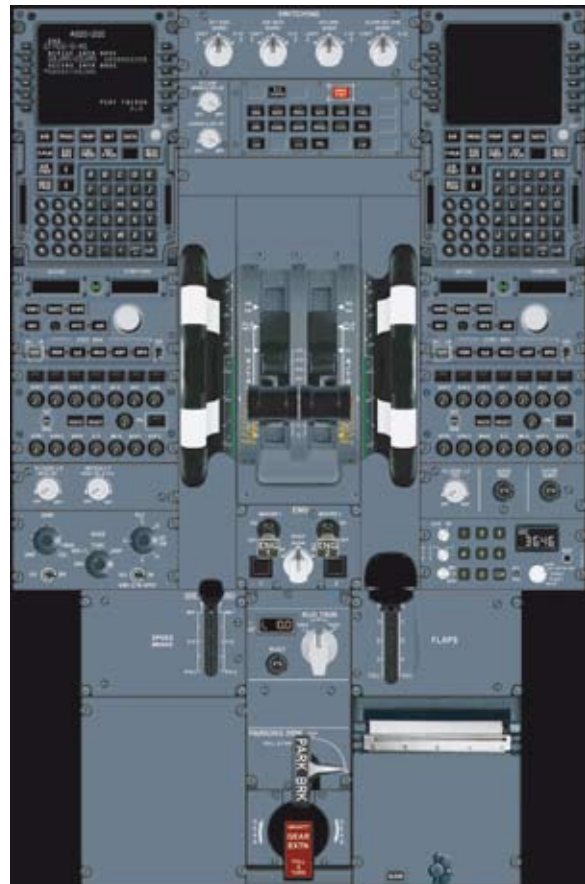
## INSTRUCTOR OPERATOR STATION (IOS)



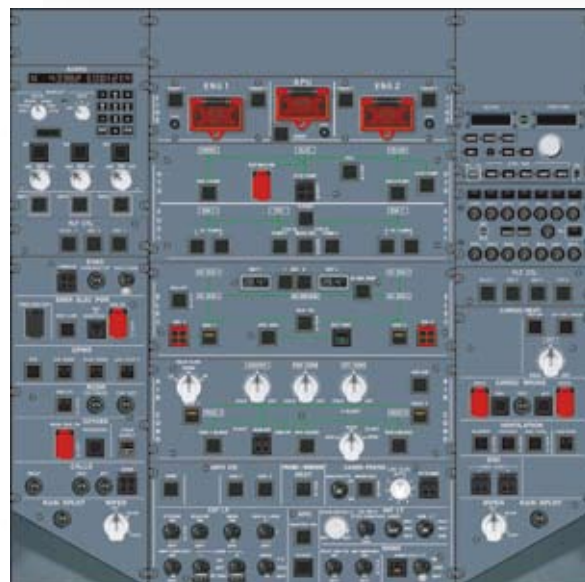
## TRAINING EVENTS (PARTIAL LIST)

- FMGS procedures.
- ECAM normal / abnormal.
- Pre-flight and in-flight checklists.
- Take-off procedures
- Rapid descent.
- Precision approaches.
- Pick-list of systems malfunctions.
- The best introduction to FFS manoeuvres : CAT II / III Training, Rejected Take-offs, Engine Failures / Fire, Complex Abnormals, TCAS / GPWS Escape manoeuvres...
- Take-off procedures

## PEDESTAL A320 2D



## OVERHEAD A320 2D



### 3D COCKPIT

- Modular cockpit architecture.
- Active devices are represented with simulated display panels and functioning switches, levels, etc. Activation of these controls and switches accurately replicate those in the airplane.



### FEATURES

- Realistic cockpit replica.
- Re-hosted simulation software.
- Accommodates customer navigation database.
- Mobile Instructor Operator's Station (IOS).
- PC - based Windows environment.

### OPTIONS

- Visual system.
- Flight controls.
- Cockpit enclosure.
- TCAS II.
- Maintenance training module.
- FMS II (Honeywell & Thales / Smiths).
- Customized ACARS.



### DEDICATED CUSTOMER SUPPORT

- With each sale, we aim at forging a partnership with our customer that lasts throughout the lifetime of the product. Complete customer satisfaction is our number one goal.
- We offer a full range of services to optimize the performance of your trainer :
  - Technical assistance
  - Timely distribution of Technical Support Bulletins
  - Service Information Letters
  - Customization services
  - Installation and training services
  - Software upgrades...
- For faster and more convenient service in fulfilling your support requirement, we have one point of contact : the Customer Support Manager.